

COP30, Methane Action: No Organic Waste (NOW)

(Public – Private – Philanthropy – People Partnerships)



Carolina Urmeneta

Waste & Circular Economy Program Director



COP30 - LAC: Implementation, Solutions Mobilization, Partnerships, Emergency Brake



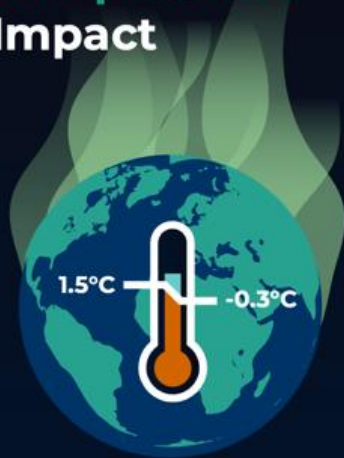
COP30 MAIN EVENT:
LOW-METHANE PARTNERSHIP IN ACTION:
SCALING EQUITABLE COMMUNITY-LED WASTE METHANE SOLUTIONS

11:30 AM - 1 PM BRASIL | SIDE EVENT ROOM 3, BLUE ZONE
 NO-BURN/ORG/GRUA-COP30

MODERATOR		PANEL 1			
MARTINA OTTO Head of Sustainable Climate and Clean Air Coalition	CAROLINA URPENITA Program Director Global Methane Hub	VICTOR ARGENTINO Zero Waste Coordinator Instituto Pólo	CHRISTIE KEITH International Coordinator Global		
SPEAKING MEMBERS		PANEL 2			
ADALBERTO PALMI National Secretary for Urban Environment and Environmental Quality Brazil	TOPAZIO NETO Mayor Florianópolis City Brazil	JACOB ATTAPPAH Zero Waste Director Green Africa Youth Organization Ghana	PAUL KALOKOLA Principal Environmental Officer National Environment Management Council Tanzania	YVES PETER Board Member Taka Petrosin Bumi Bersejarah Indonesia	RAP VILLAVENCIO Special Director of Programs Ministry of Environment Forest and Climate Change Philippines



Temperature Impact



Critical to keep
1.5°C within reach

-0.3°C warming
avoid by 2050

Avoided Climate damages



\$8.3 trillion
avoided damages
annually by 2050

Economic & health co-benefits

4.2 million
premature
deaths
avoided



50 million
tonnes of
crops
saved

\$370 billion annual
savings in health
costs & productivity

Reducing **organic waste
is a highly effective,
cost-efficient solution
for **significantly lowering**
methane emissions**



Global
Methane
Hub

**Pull the
EMERGENCY
BRAKE
on CLIMATE
CHANGE**



GMH goal and role in pushing solutions to implementation

Support **35% reduction of waste methane by 2030**

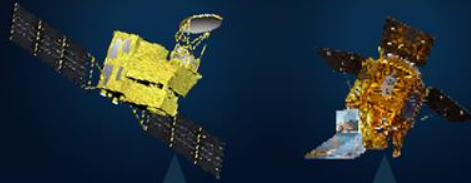


Different satellites, different opportunities

**GOSAT2
GOSAT GW**

**Sentinel 5P
Sentinel 5**

Sensitivity
1+ ton/h



Resolution:
Paris Central



7.5x7.5km



Waste Energy
Aerial emissions &
Very large point sources

**Methane
SAT**

Sensitivity
0.5 ton/h



Resolution:
8 Football fields



140x400m



Agriculture Oil & Gas
Aerial emissions &
Large point sources

**CarbonMapper
Tanager**

GHGSat

Sensitivity
0.1 ton/h



Resolution:
1 Basketball court



30x30m



Waste Energy
Point sources

UCLA: Spotlight on Top Plumes


Rank	Location	Nearby City / Area Served	Rate (metric tons/hr)	Date Range Observed	Open the Data
1	Algiers, Algeria	Algiers	7.4	Jan 2-Sept 18	Data link
2	Bekasi, West Java, Indonesia	Jakarta	7.1	Feb 15-Sept 13	Data link
3	Penco, Biobío, Chile	Concepcion	5.0	Jan 10-Aug 22	Data link
4	Talagante, Chile	Santiago	5.0	Jan 20-Oct 3	Data link
5	Al Jumum, Saudi Arabia	Jeddah	4.7	Feb 1-Sep 29	Data link
6	Jeram, Malaysia	Kuala Lumpur	4.5	May 7-Jul 9	Data link
7	Rodriguez, Philippines	Manila	4.4	Jan 26-Sept 21	Data link
8	Fazenda Rio Grande, Brazil	Curitiba	4.2	May 9-Sept 14	Data link
9	Mauá, Brazil	São Paulo	4.0	Feb 5-Jun 20	Data link
10	Hong Kong North District	Hong Kong	3.9	April 3-Sept 27	Data link
11	Campo de Mayo, Argentina	Buenos Aires	3.9	Jan 9-Sept 16	Data link

ANNOUNCING:

UCLA's STOP Methane Project (Spotlight on Top Plumes)

Check out our new user-friendly ranking of super-polluting methane emissions across multiple sectors.

UCLA School of Law
Emmett Institute on Climate Change & the Environment




Composting Plant, BELEM

Belem + Catadores + Instituto Polis + GAIA+
MMA + COP30 + GMH, among others:

- Design and operation
- Cost-effective
- Just Transition
- Capacity Building
- Job Creation



Press conference
**Compost for the win:
How COP30 can
deliver methane
cuts and good jobs**



[UN OFFICIAL EVENT]
**LOW-Methane Partnership in Action: Scaling
Equitable Community-Led Waste Methane
Solutions**

Partnerships example...

COLLABORATIVE INITIATIVE AIMS TO:

- 🌱 mobilize finance
- ♻️ Keeping organic waste out of landfills
- 💡 Promote circular business models (composting)
- 👤 Strengthen the role of cities and local communities
- 🌿 Just transition for waste pickers and small enterprises

SEBRAE (Brazilian Micro and Small Business Support Service) + FNP (National Front of Mayors), ABRASEL (Brazilian Association of Bars and Restaurants) + Instituto Pólis and the Global Methane Hub



Brazil leading by the example

- National Strategy for Organic Waste
- Waste Mitigation Action Plan
- National Plan on Super emitters
- 12 subnational governments committed to Landfill Methane Mitigation
- LIR (Lei de Incentivo à Reciclagem a compostagem e a economia circular)
- More to come...



LAC Collaboration & Coordination

LAC, 33 countries endorsed a shared vision to cut methane from waste:

- ✓ By 2030: 30% reduction in CH₄ emissions.
- ✓ By 2035: Divert 30% of organic waste from landfills and establish separate collection and treatment systems.
- ✓ By 2040: End organic waste disposal in landfills and close dumpsites across the region.

+ Regional Action Plan on Ecosystem Restoration and Water Security. Synergies???



Lowering Organic Waste Methane Initiative (LOW-Methane)



Sustainable Waste Systems Accelerator, C40

Cities committed to 3 targets by 2030:

- ✓ Providing Citiwide collection services.
- ✓ Treating at least 30% of organic waste.
- ✓ Reducing waste disposal emissions by at least 30% (METHANE!).

Lowering Organic Waste Methane Initiative (LOW-Methane)



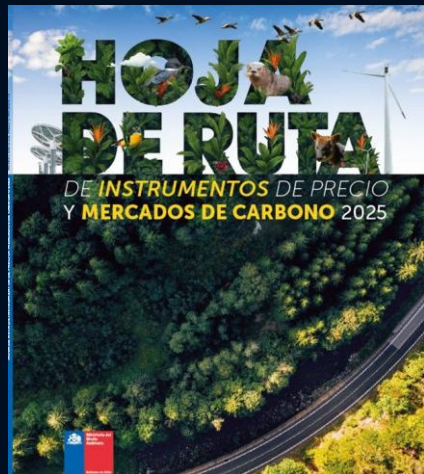
InstitutoPólis



22 Cities are on track to reduce 1.2 mtCH₄ by 2030 by improving their organic waste management.

Removing over 100 million tons of CO₂ or taking 22 million cars off the road.

Markets and Non-Market, Article 6



RECICLO ORGÁNICOS CHILE PUBLICADO EN LA PLATAFORMA DE ENFOQUES NO DE MERCADO DEL ACUERDO DE PARÍS

☐ Reciclo Orgánicos Chile: Accelerating Methane Emissions Reductions in the Waste S...

Submitting Party: Chile ([host](#))

Participating Parties: Canada

Sector: Cities, settlements and infrastructure, Energy systems, Health and nutrition, Land, ocean, food an...

Support needed: Technology development and transfer, Finance, Capacity-building

Support provided: Technology development and transfer, Finance, Capacity-building

Reciclo Orgánicos Chile was a five-year program dedicated to reducing the emission of short-lived climate pollutants from the solid waste sector, specifically those produced by organic matter in landfills, through the...

82 Oct 2025 [View details](#)

Search non-market approaches

Filters

Region: [Show](#)

Phase area:

Topic:

Support needed:

Support provided:

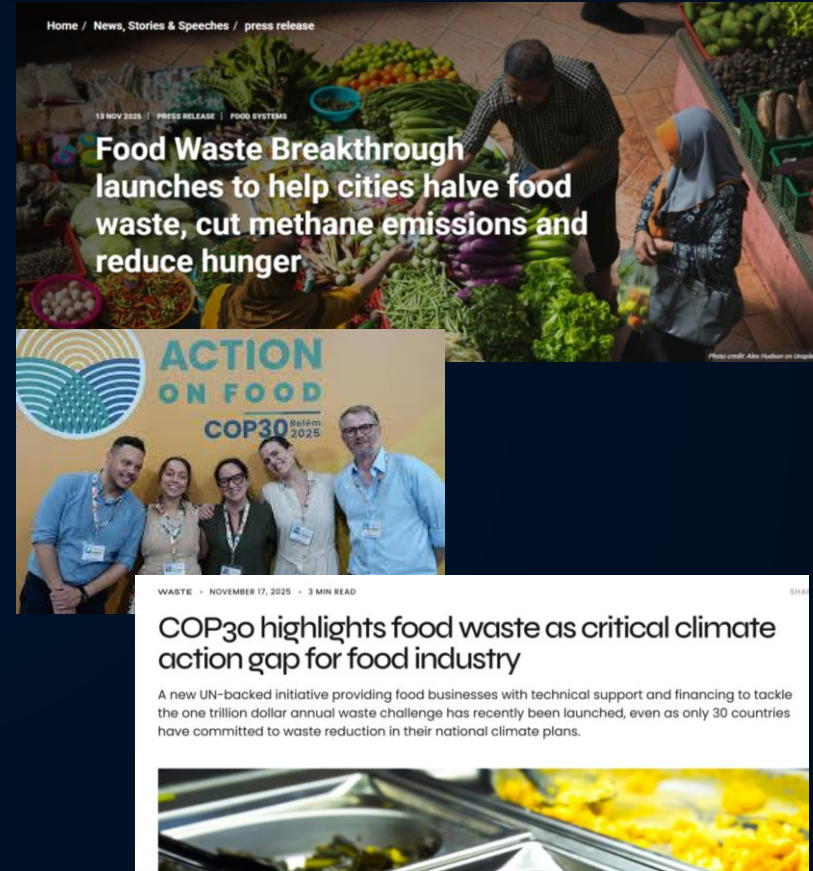
A world map with a green outline of Chile. The map is color-coded by region: North America (green), South America (orange), Europe (blue), Africa (red), Asia (teal), and Australia (yellow). The map is part of a search interface for non-market approaches.

FLW Prevention & Recovery

- More than 30 NDCs:

Cameroon, Cape Verde, Ethiopia, Jordan, China, Gambia, Uruguay, Qatar, Malawi, Sierra Leone, Maldives, Mozambique, Senegal, Indonesia, Uruguay, Sri Lanka, United Kingdom, Vanuatu, Cambodia, Jordan, Chile, Uruguay, Colombia, United Arab Emirates, Indonesia, Nepal, Somalia, Angola, Micronesia (Federated States of), Mauritius, Kyrgyzstan, Nigeria, Eswatini,...

- **Food Waste Breakthrough:** UNEP, GEF; GFN, WRAP, REFED, Private Sector, among others.



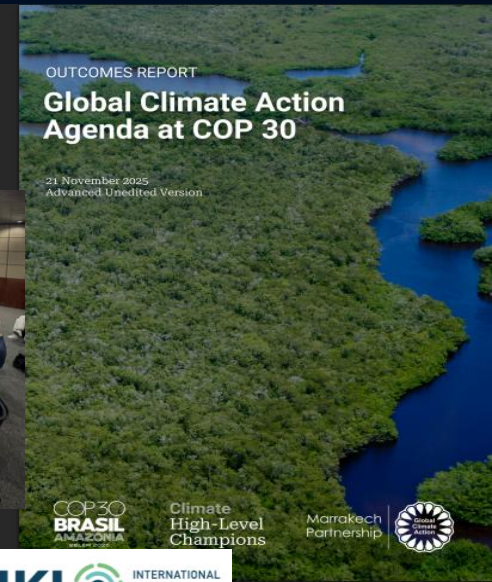
NOW: No Organic Waste (Umbrella Initiative)

✓ Circular Economy NOW (No Organic Waste)

LOWM, ROW, Food Waste Breakthrough
+50 organizations: Data, Capacity Building,
Policies, Finance

GMH (30mUSD): Catalytic Support for
methane mitigation.

IKI (15mEUR): Urban value chains through
bioenergy use: scalable solutions for
sustainable methane reduction



COPs, Next steps?

- ✓ COP31: Turkey + Australia
- ✓ UN Water Conference (Sanitation)
- ✓ COP32 (Ethiopia)



CCAC SUPER POLLUTANT COUNTRY ACTION ACCELERATOR

Embedding super pollutant coordination teams in governments

FIRST COHORT COUNTRIES

- Brazil
- Cambodia
- Indonesia
- Kazakhstan
- Mexico
- Nigeria
- South Africa

